

# Density800 Mattress



Polyurethane HR  
+ Viscoelastic



HR Foam  
dneisty



Viscoelastic  
density



Natural latex  
free



Thermo- adap-  
table material



Breathable  
material



Fireproof  
material



Anti-allergy  
material



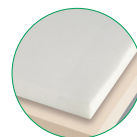
## + Mattress characteristics

Specially designed mattress to be used in hospital environments and health centres, for bariatrics patients with medium ulceration risk, as well as for mitigate the pressure ulcers or sores in early stage.

## + Core



- 1 Core with HR polyurethane foam base, Freefoam (35 kg/m<sup>3</sup>). High porosity foam, that allows the air circulation through the foam, avoiding humidity and patient maceration; Height 10 cm.



- 2 Upper layer made of high density thermo-sensitive viscoelastic foam (85 kg/m<sup>3</sup>) with 6 cm. height, with high adaptation capacity, achieving a large contact surface with the patient, reaching low capillary occlusion levels, avoiding the UPP's appearance.

## + Technical specifications

Core height	16 cm.
Core weight	10 kg.
Maximum patient weight (MPW)	230 kg.
Ulceration risk	III - Medium
Available widths	80 / 85 / 90 cm.
Available lengths	180 / 190 / 200 cm.



# Density800 Mattress



## + Core characteristics



- Framed lower mattress layer for an optimal patient pressure whilst he is placed in the bed. High adaptability of the mattress to the bed, promoting its circulation.
- Non-flammable core according to the “Furniture and Furnishings (Fire)”, BS 5852:2 CRIB2, UNE EN 597-1 y EN 597-2, regulations.
- All foams are Oeko-Tex class I and REACH certified.
- Suitable for patients with medium ulceration risk and/or considered bariatrics.
- Symmetric core allows using indistinctly the head or feet areas
- OPTIONAL: Cut the corners of the mattress, for better adaptability to the beds.

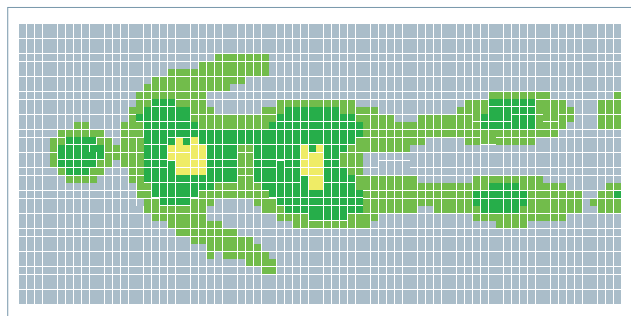
## + Pressure map

The contact pressure test shows that a bariatric model user keeps in contact of the body, no matter in the whatever position is taken, consequently there is a large contact surface between the mattress and the user, avoiding high pressure points that may cause pressure ulcers (bedsores).

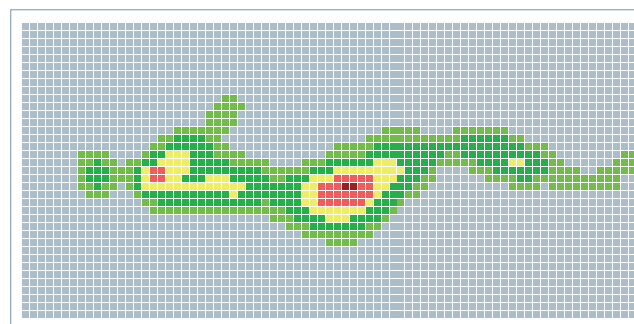
The test proved that it is a perfect mattress to use with bariatric patients, due to its firmness and patient adaptability

In positions such as supine or Fowler, the medium pressure showed didn't exceed 10 mmHg.

In other positions, lateral or seated, the Model reached the highest maximal because on those positions it is easier that the hip and shoulders become more flagged.



Gender: Female. Weight: 95kg. Height: 170cm.



Gender: Female. Weight: 95kg. Height: 170cm.