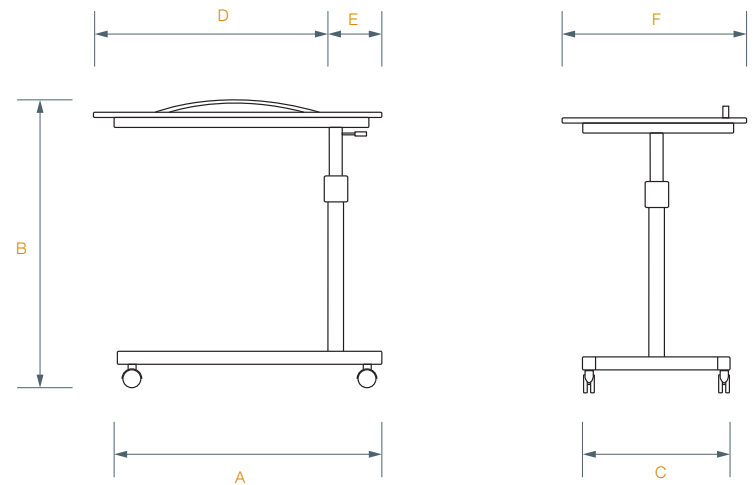
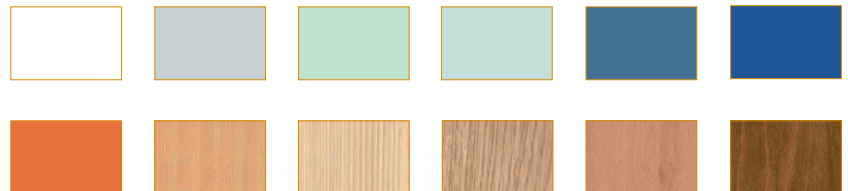


Atril Gas Table



Colour options:



Features

Auxiliary table with casters.

Height adjustment made by a gas spring driven by an existing lever underneath the table.

Tubular steel structure with polyester coating.

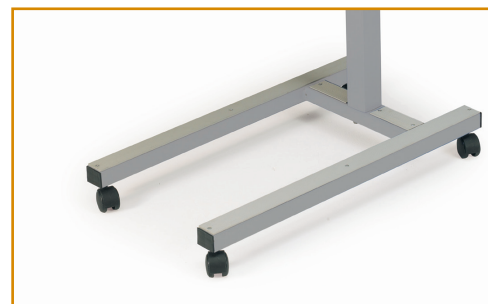
Stainless steel telescopic column.

Bi-oriented tray panel with five positions (47° maximum) and made of HPL (High Pressure Laminated). It is shatterproof, fireproof and easy cleaning. Handle included.

This material has the possibility to be made in a large range of colours and finishes.

4 double pivoting wheels with independent brake and thermoplastic rubber band, for easy usage, safety and silent handling.

“U” or “H” shape base version available depending on user needs.



Technical information

Structure dimensions:

Length (“U” Foot) (A)	820 mm. ± 5 mm.
Length (“H” Foot) (A)	700 mm. ± 5 mm.
Width (C)	400 mm. ± 5 mm.
Minimum height (B)	735 mm. ± 5 mm.
Maximum height (B)	1150 mm. ± 5 mm.
Wheels diameter	50 mm.

Board dimensions:

Length (D + E)	650 + 230 mm.
Width (F)	430 mm.
Tilting the board	84°



All our manufacturing is protected by our patents. Pardo reserves the right to modify, without prior notice, our models and technical specifications described in this datasheet. This technical information refers to a standard configuration. Any option can make it varies.