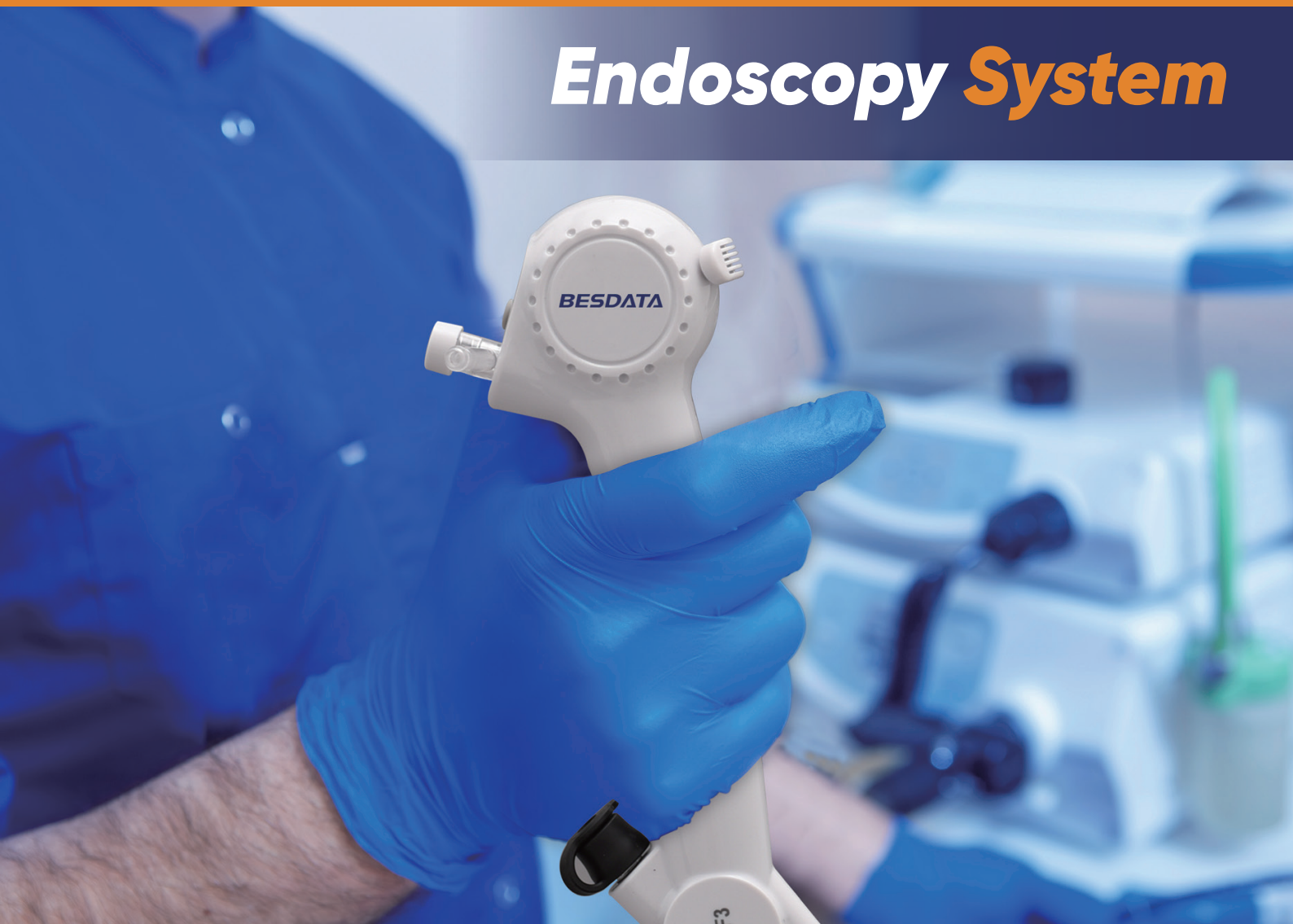


**BESDATA<sup>®</sup>**



# Endoscopy **System**



# Medical Image Processor With Monitor



## Image Processor Specification<sup>+</sup>

Model	MIP1002
Name	Image Processor
Weight	1680g
Size	260mm*210mm*50mm

Screen	Description
Screen Size	10.1inch
Screen Type	TFT LCD
Length-width Ratio	16:10
Resolution	1280X800

Connectors	Discription
Video Input	10/14 pin lemo plug
Video Output	AV,HDMI, SDI, DVI,USB3.0
Photo and Video Store	SD Card

Recording Function	
Recording Format	JPG for photograph, MP4 for video
Memory Capacity	32GB

Function Button	Discription
Power switch	Power on/off
Brighten the image brightness	Brighten the image brightness
Dim the image brightness	Dim the image brightness
Video	Recording video
Photo	Photograph
Zoom in/out	Zoom in or zoom out the image
White balance	Manual white balance
User mode	User mode





# Single Use Ureteroscope

- No CrossInfection
- No Sterilization
- No Scope Repairs
- Consistent Performance for Every Case
- No Reprocessing

## + Product Parameters

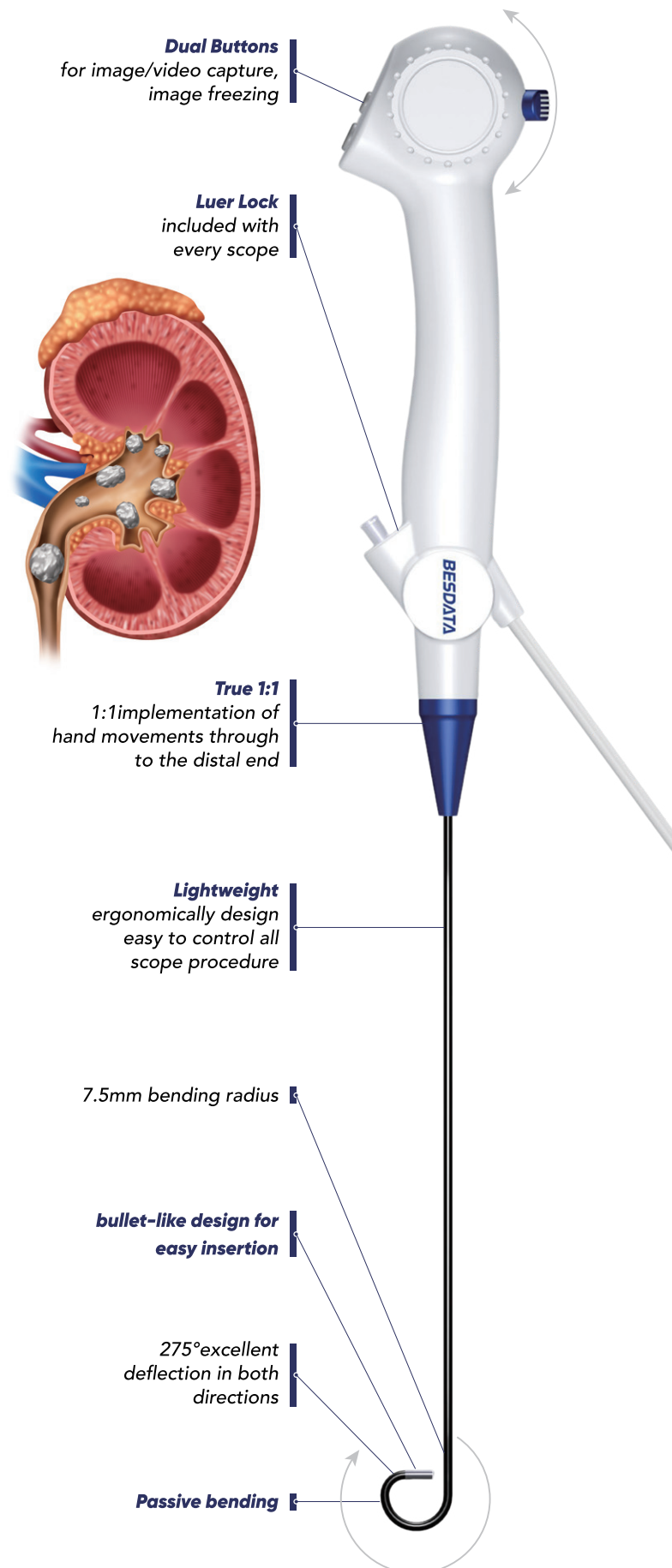
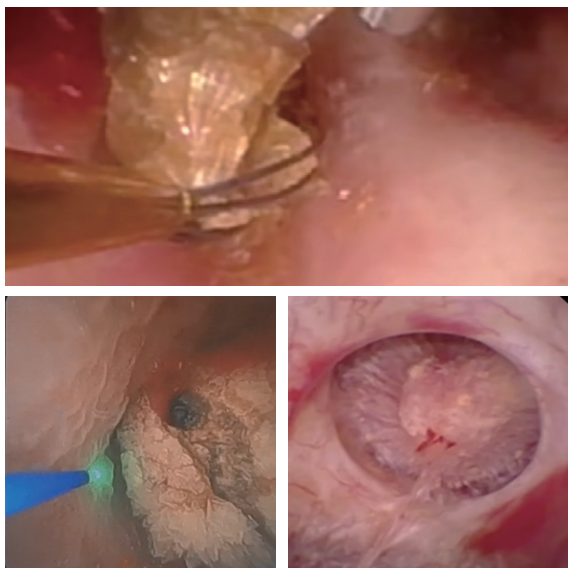
Model No.	UR-F1	UR-F2
Field of View	120°	120°
Direction of View	0°	0°
Depth of Field	3-50mm	3-50mm
Insertion Tube Outer Diameter	8.5Fr (2.8mm)	7.5Fr (2.5mm)
Working Channel Diameter	3.6Fr (1.2mm)	3.6Fr (1.2mm)
Angulation Range	275°Up/275°Down	275°Up/275°Down
Working Length of Shaft	650mm	650mm





### Why BESDATA Single-Use Digital Flexible Ureteroscope for Your Hospital?

- No costly scope repairs, no scope damage worry
- Consistent performance for every case no reprocessing
- No cross contamination
- No cleaning and sterilization of postoperative instruments, save your time and money
- No initial investment for endoscopy





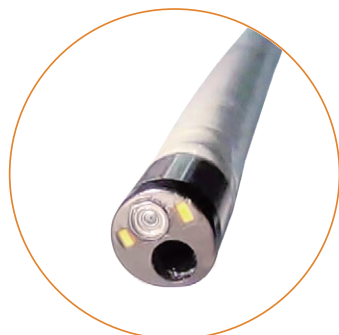
# Flexible Disposable Bronchoscope



Compatible With Image Processor  
And Portable HD Monitor



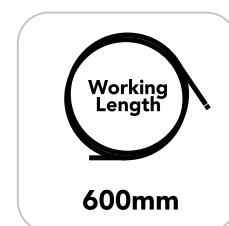
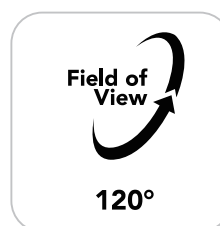
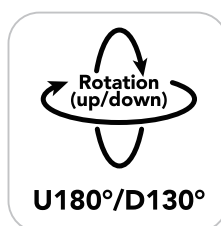
Ergonomic Design  
Suction Capabilities Single-Use  
Sterilization



CMOS+LED Technology  
High Image Quality, No fiber,  
Passive Bending

## Product Parameters<sup>+</sup>

Model Number	Insertion Tube Outer Diameter(mm)	Working Channel(mm)
BR-F1	2.8	1.2
BR-F2	3.8	/
BR-F3	5.2	2.2
BR-F4	5.8	2.8



### Application:

Pneumology: bronchoscopy, peripheral observation and interventional therapy. for bedside procedures in the intensive care unit, operating room and bronchoscopy suite.

### Specifications:

Bronchoscopy procedures such as secretion management, airway intubation, percutaneous tracheostomy, double lumen endotracheal tube placement and biopsy.

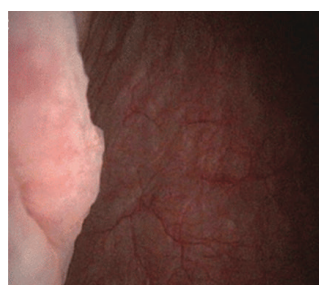
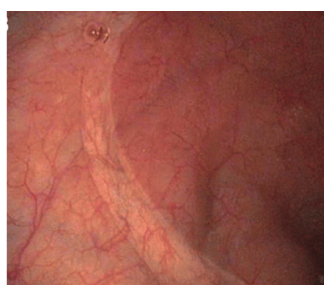
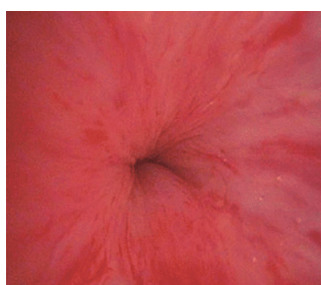
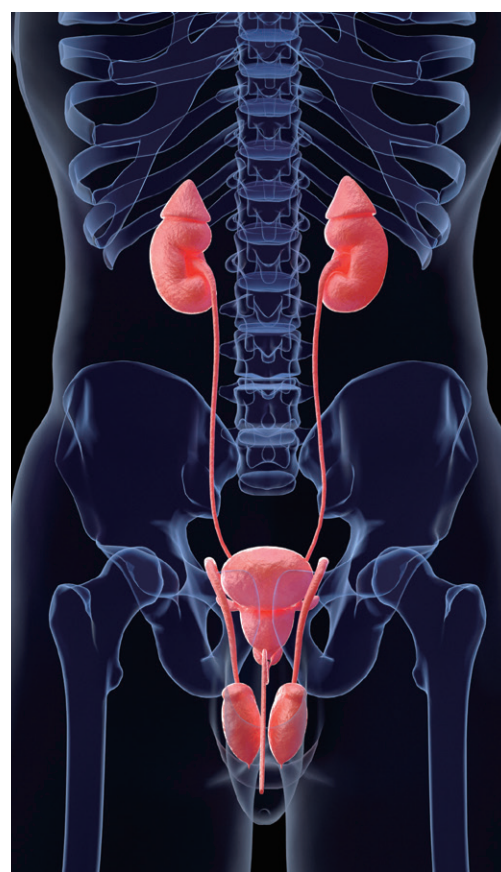
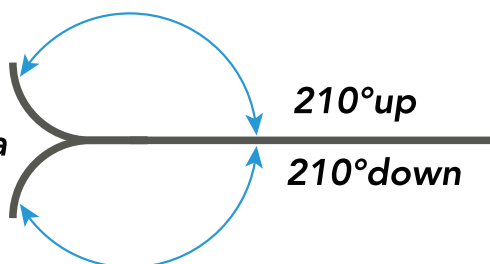


# Single Use Cystoscope

## Product Parameters<sup>+</sup>

Model No.	CY-F1
Field of View	120°
Direction of View	0°
Depth of Field	5-100mm
Insertion Tube Outer Diameter	5.2mm
Working Channel Diameter	2.2mm
Angulation Range	210°Up/210°Down
Working Length of Shaft	380mm

/  
Navigate in the  
bladder and urethra



# Single Use Choledochoscope



Compatible with  
conventional  
accessories



## Product Parameters<sup>+</sup>

Model No.	CH-F1
Field of View	120°
Direction of View	0°
Depth of Field	5-100mm
Insertion Tube Outer Diameter	5.2mm
Working Channel Diameter	2.2mm
Angulation Range	180°Up/130°Down
Working Length of Shaft	380mm
Compatible Monitor	BD-M7 MIP1002 (HD Monitor)



**Always better *solution***

**BESDATA<sup>®</sup>**

---

✉ [support@besdatatech.com](mailto:support@besdatatech.com)

☎ +86-755-84416070

📍 503, Building #2, Xinnantian Industrial Park, No. 3179, Danzi Avenue, Laokeng Community, Longtian Street, Pingshan District, Shenzhen