



GH3/GH3+ Lifting modules Technical specifications

Weight and materials

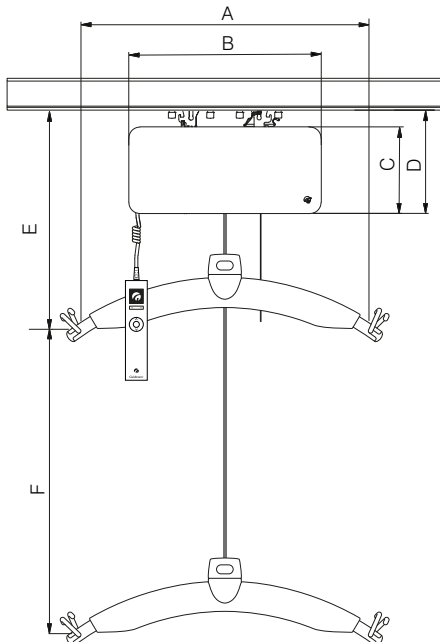
SWL	: 200 kg, 250 kg, 275 kg
Own weight	: 9.6 kg
with horizontal motor	: 10.5 kg
with scale module	
and horizontal motor	: 11.1 kg

SWL	: 300 kg, 350 kg, 375 kg, 400 kg
Own weight	: 14.2 kg
with horizontal motor	: 15.9 kg
with scale module	
and horizontal motor	: 17.3 kg

Covers : Impact-resistant UL 94 V-0 flame retardant recyclable plastic

Dimensions

A	: 580 mm
B	: 345 mm
C	: 156 mm
D	: 184 mm
E, min	: 425 mm
F	: 2.500 mm
Depth of hoist	: 205 mm



Functions

Operation	: Hand control / IR
Sound level	: 52 dB (A)
Horizontal speed	: 220 mm/sec. (Horizontal drive motor)

Safety

Emergency stop	: Yes
Emergency lowering device	: Yes, mechanical and electrical
Control of lifting strap	: Yes
Cut-off angle	: 45° along the rail 10° across the rail

Electronics

On/off	: Automatic when used. Soft start/stop. Overload protection.
--------	---

SWL	: 200 kg, 250 kg, 275 kg
Battery	: 1 x 24 V NiMH, 2.1 Ah
Max charge time (rail)	: 2 hours
Max charge time (hand control)	: 3 hours

SWL	: 300 kg, 350 kg, 375 kg, 400 kg
Battery	: 2 x 24 V NiMH, 2.1 Ah
Max charge time (rail)	: 4 hours
Max charge time (hand control)	: 6 hours

Battery protection : At battery voltage below 22 V, the indicator light turns orange. The hoist stops if the voltage drops below 20 V

Power supply	: 33 V AC, 2.5 A
Supply voltage, transformer Class I	: 100-240V AC
transformer Class II	: 100-115V AC / 220-230V AC

Protection classification (IP) according to IEC 60529

Lifting module	: IP 20
Hand control	: IP 44
Remote control	: IP 20
Transformer Class I	: IP 20
Transformer Class II	: IP 21

Labelling

The product is manufactured in compliance with regulation (EU) 2017/745 of the European parliament and of the Council of 5 April 2017, as medical device Class I.

Classification

Pursuant to ISO 9999

Patents	: PA 2008 00888 PA 2008 00894 PA 2008 00895
---------	---

Time to care



GH3/GH3+ Lifting module Technical specifications

GH Lifting modules, configurations			Options														
Guldmann hoist type	Lifting speed, mm/s (Normal / Turbo)	Load in kg	Wi-Fi enabled	Data transmission shown on MyGuldmann	Hand control with display	Function on demand	Scale	Class III scale	Trainer	Coating	UL	Automatic charging	Charging in docking station	Positioning lock	IR remote ^{x)}	Horizontal drive motors ^{x)}	
GH3	40/100	200								•	•	✓	•	•	•	•	
		250								•	•	✓	•	•	•	•	
		275									•	•	✓	•	•	•	•
		300									•	•	✓	•	•	•	•
		350									•	•	✓	•	•	•	•
		375									•	•	✓	•	•	•	•
		400									•	•	✓	•	•	•	•
GH3+	60/100	200	✓	✓	✓	•	•	•	•	•	•	✓	•	•	•	•	
		250	✓	✓	✓	•	•	•	•	•	•	✓	•	•	•	•	
		275	✓	✓	✓	•	•	•	•	•	•	✓	•	•	•	•	
		300	✓	✓	✓	•	•	•	•	•	•	✓	•	•	•	•	
		350	✓	✓	✓	•	•	•	•	•	•	✓	•	•	•	•	
		375	✓	✓	✓	•	•	•	•	•	•	✓	•	•	•	•	
		400	✓	✓	✓	•	•	•	•	•	•	✓	•	•	•	•	

- *Optional*
- ✓ *Always included*
- x) *Not compatible with UL*

Lifting speed	GH3	GH3+
85 kg load	40 mm/sec.	60 mm/sec.
150 kg load	40 mm/sec.	60 mm/sec.
Max capacity load, SWL	40 mm/sec.	55 mm/sec.
Max 5 kg load	40/100 mm/sec.	60/100 mm/sec.

Number of lift and Intermittent

Max. number of lifts in series : 55 with 85 kg/1000 mm
 Max. charge time (rail) : 2 Hours
 Max. charge time (hand control) : 3 Hours
 Intermittent : 4 min. ON/16 min. OFF

SWL : 200 kg, 250 kg, 275 kg
 Max. number of lifts in series : 21/1000 mm
 Max. charge time (rail) : 2 Hours
 Max. charge time (hand control) : 3 Hours
 Intermittent : 2 min. ON/18 min. OFF

SWL : 300 kg, 350 kg, 375 kg, 400 kg
 Max. number of lifts in series : 40/1000 mm
 Max. charge time (rail) : 4 Hours
 Max. charge time (hand control) : 6 Hours
 Intermittent : 2 min. ON/18 min. OFF