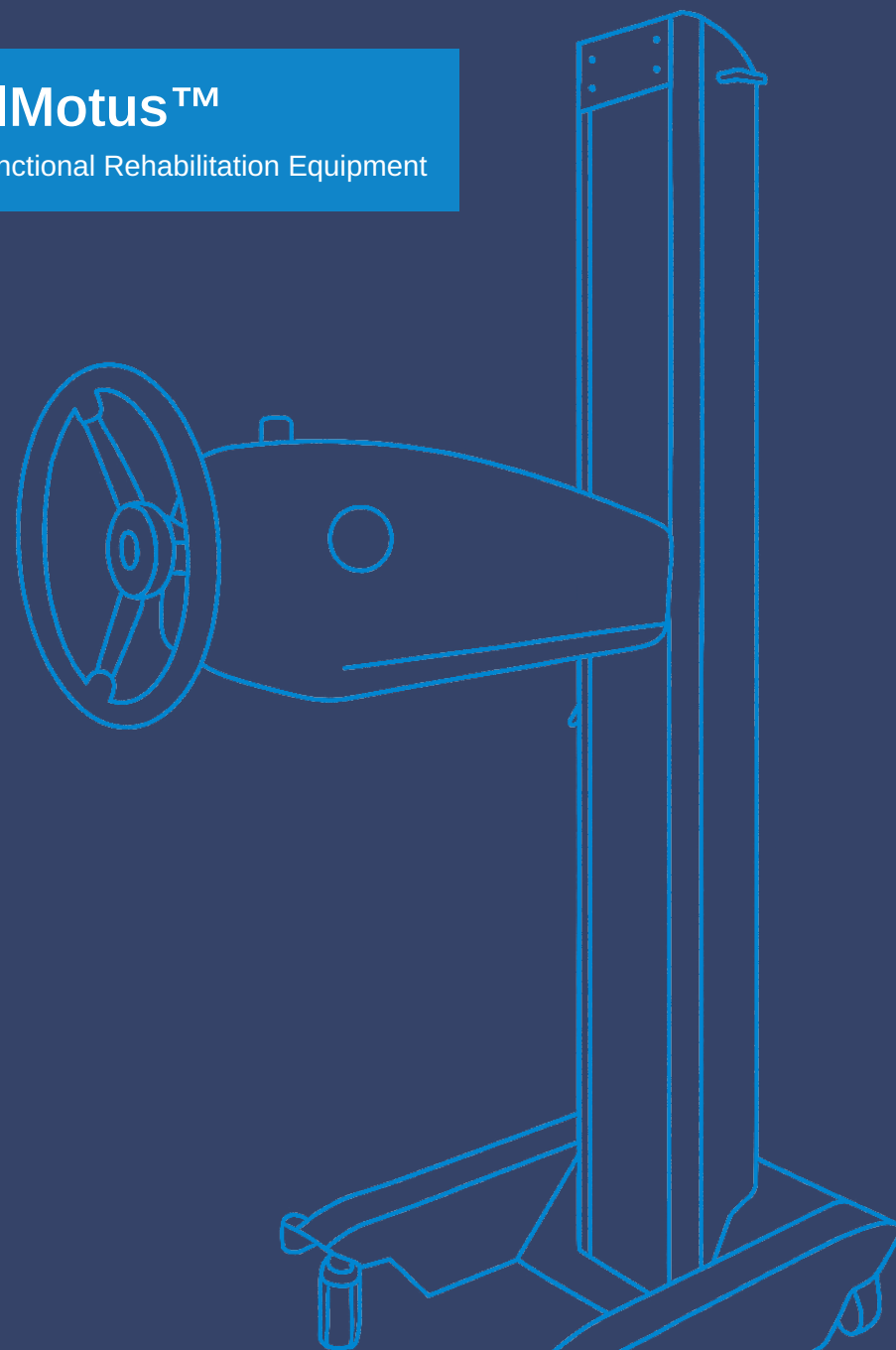


## Fourier Intelligence Global Partnership Network



## DualMotus™

Multi-Functional Rehabilitation Equipment



[www.fftai.com](http://www.fftai.com)



[care@fftai.sg](mailto:care@fftai.sg)



[@FourierRehab](https://www.youtube.com/@FourierRehab)



[@FourierRehab](https://www.facebook.com/@FourierRehab)

### China Corporate Office

**Fourier Intelligence Co. Ltd**  
Floor 2, Building 12,  
No. 2388 Xiupu Road,  
Pudong District,  
Shanghai, China, 201203

Tel: +86 21 5030 8716

### Global HQ

**Fourier Intelligence  
International Pte. Ltd.**  
Marina One West Tower,  
9 Straits View #05-07,  
Singapore 018937

Tel: +65 6911 6651

### Malaysia Corporate Office

**Fourier Intelligence Sdn. Bhd.**  
Level 8-2, Menara Pemas,  
Tower 7, Avenue 7,  
Bangsar South City,  
59200 Kuala Lumpur

Tel: +603 2242 0170

## DualMotus™

DualMotus™ is a cutting-edge multi-limb robotic rehabilitation system designed to restore mobility, strength, and independence for patients recovering from stroke, neurological injuries, or orthopedic conditions.

FDA-approved, ISO 13485 certified, and based on patented technology, DualMotus™ redefines therapy through immersive simulation, smart tracking, and gamified rehabilitation.



### Real-Time Recovery

Real-time therapy for stroke and injury recovery.



### Interactive Neuro Rehab

Practice activities of daily living (ADLs) through interactive games and measurable outcomes.



### Compact & Mobile

Space-saving design, easily movable for flexible clinic setups.



## Comprehensive Rehab Framework

The software ecosystem combines personalized assessments, real-time tracking, and interactive 3D games & ADL simulations to enhance rehabilitation by improving mobility, strength, and cognitive function.



### Precision Rehab

DualMotus™ offers smart, full-spectrum rehab with adaptive therapy and digital assessments.



### Personalized Evaluation

Accurate digital assessments tailor the program to each patient's condition.



### 8 Training Modes

4 Assistive & 4 Resistive modes designed to match different recovery stages.



### Real-Time Progress Tracking

Visual reports help patients and therapists monitor recovery effectively.

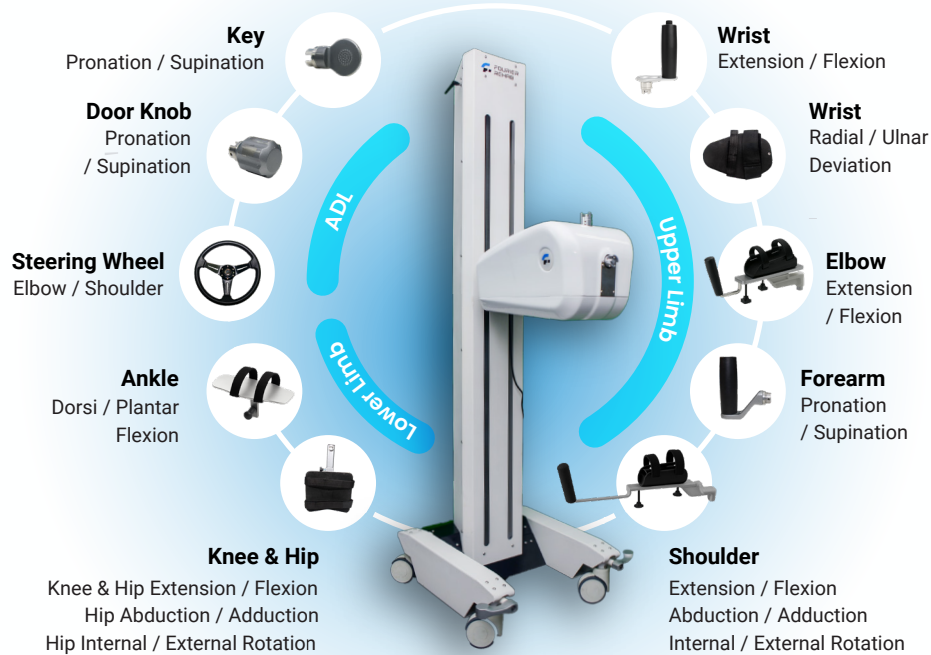


### 50+ Interactive Games

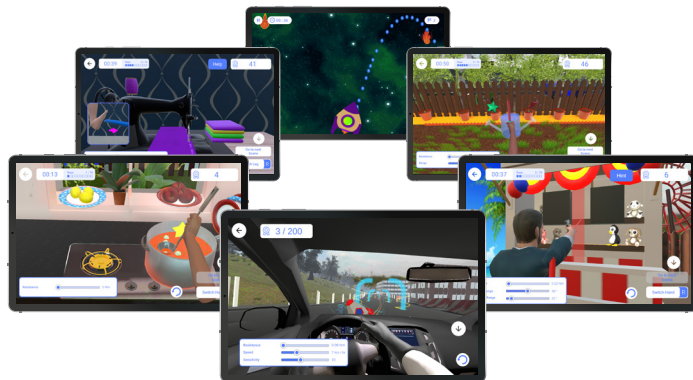
ADL and cognitive games enhance motivation and support full-limb recovery.



## Attachments



## Gamification Training



## Empowering You

Fourier Intelligence is a technology-driven company, infusing creativity into the development of exoskeleton and rehabilitation robotics since 2015. Together with researchers, therapists and patients, we aim to excel in developing and redefining rehabilitation robotics solutions with interconnectable intelligent robotics technology by elevating user experience with an intuitive, easy-to-use system to enhance the lives of both patients and therapists.

### Fourier Global Research Joint Laboratories and Clinical Partners

